

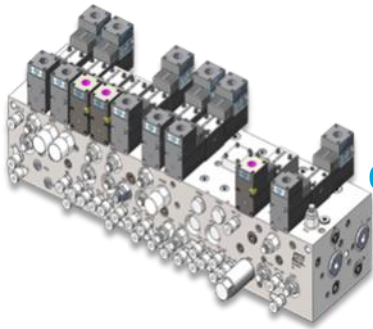
# Custom Top Drive and Iron Roughnecks

## Design & Technical Department:

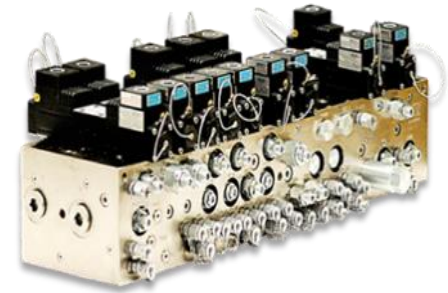
Our qualified Design Team is skilled in AutoCAD and 3D SolidWorks allowing us to offer customers comprehensive project drawings for review and approval prior to production or assembly, improving time efficiency and performance.

## Engineering Department

With extensive factory certifications from major manufacturers such as Oilgear, Kawasaki, Aventics, Atos, and Moog, our mechanical engineers are true hydraulic designers who test, evaluate, and analyze actual system performance under various operating scenarios.



**Maximize performance and efficiency with CFI's highly qualified Design Team and our extensive onsite production facilities.**



## Customer Support

- We can assist not only with hydraulic components, but also provide complete turnkey solutions. We design and build complete hydraulic control manifolds for these applications where size is a major design constraint. CFI can design top drive or iron roughneck platforms that meet the requirements of ATEX, IECEx, UL, I.S., and Rostechnadzor.



- CFI and help with system integration and offer remote packages to include the completed enclosure and radio systems for zone rated areas.
- 100% of every system built is tested in house to the design specifications and customer requirements prior to shipping.